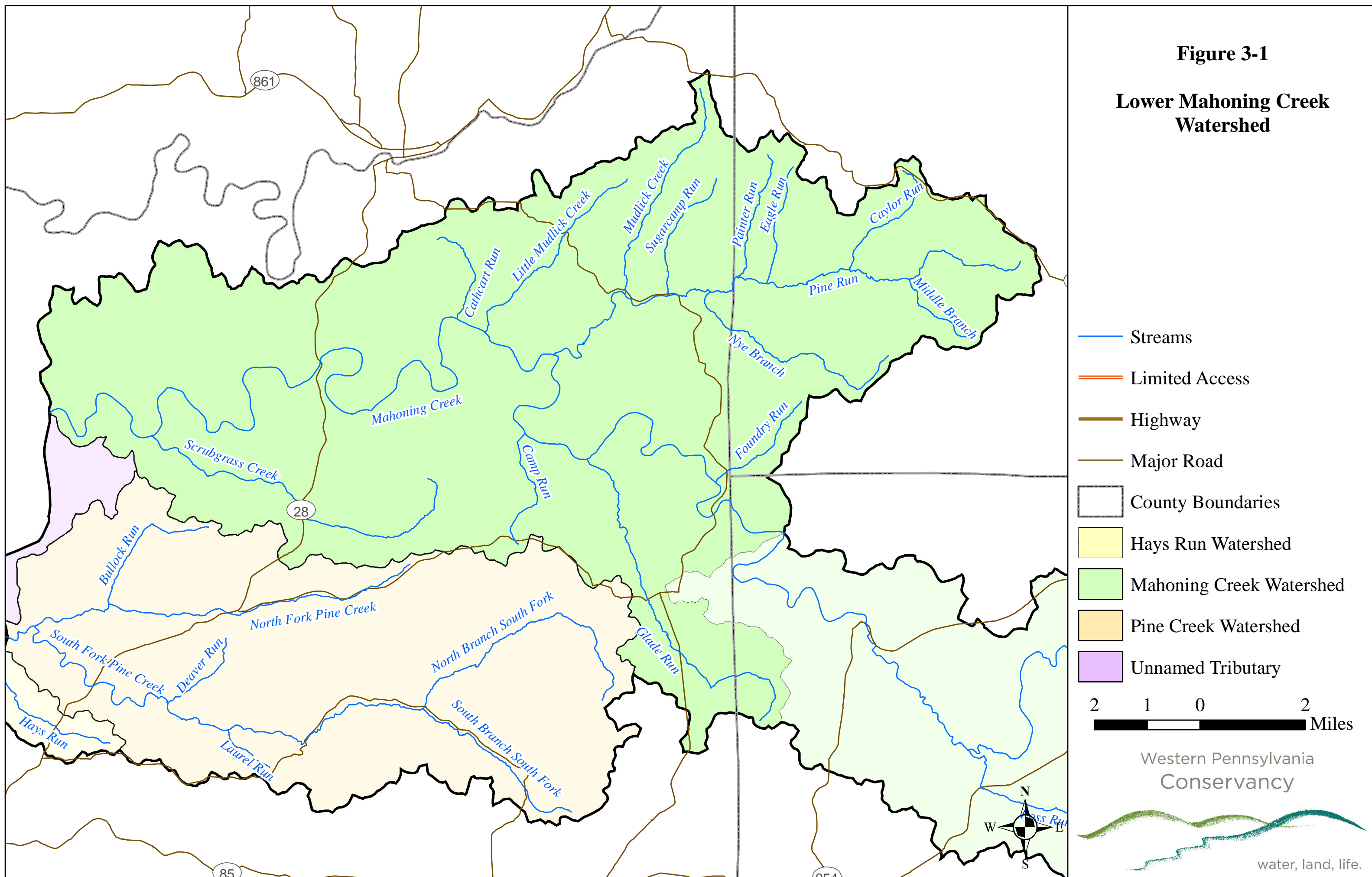


**Figure 3-1**

**Lower Mahoning Creek Watershed**



- Streams
- Limited Access
- Highway
- Major Road
- County Boundaries
- Hays Run Watershed
- Mahoning Creek Watershed
- Pine Creek Watershed
- Unnamed Tributary

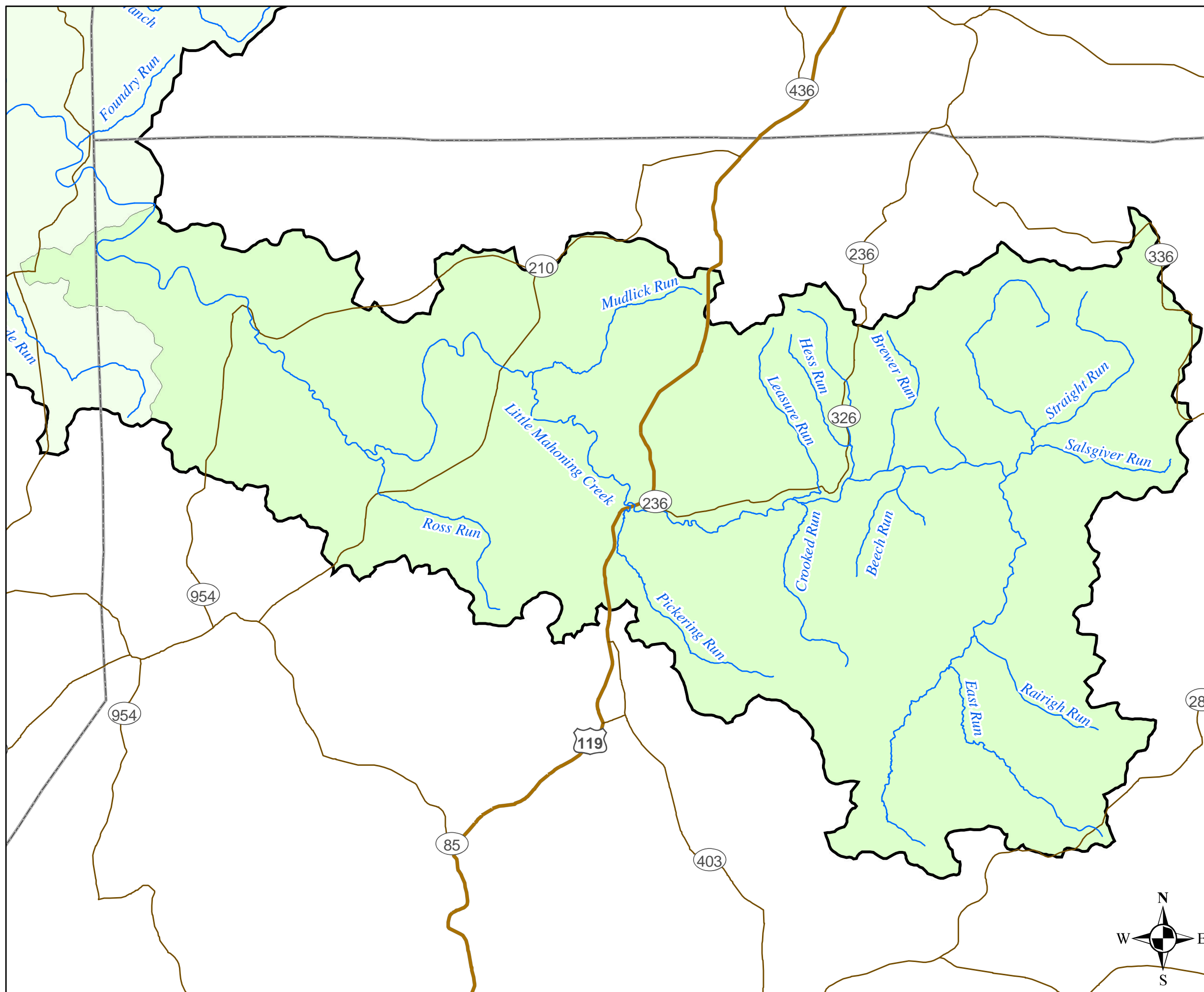
2 1 0 2 Miles






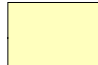



Western Pennsylvania Conservancy



**Figure 3-2**

**Little Mahoning Creek Watershed**

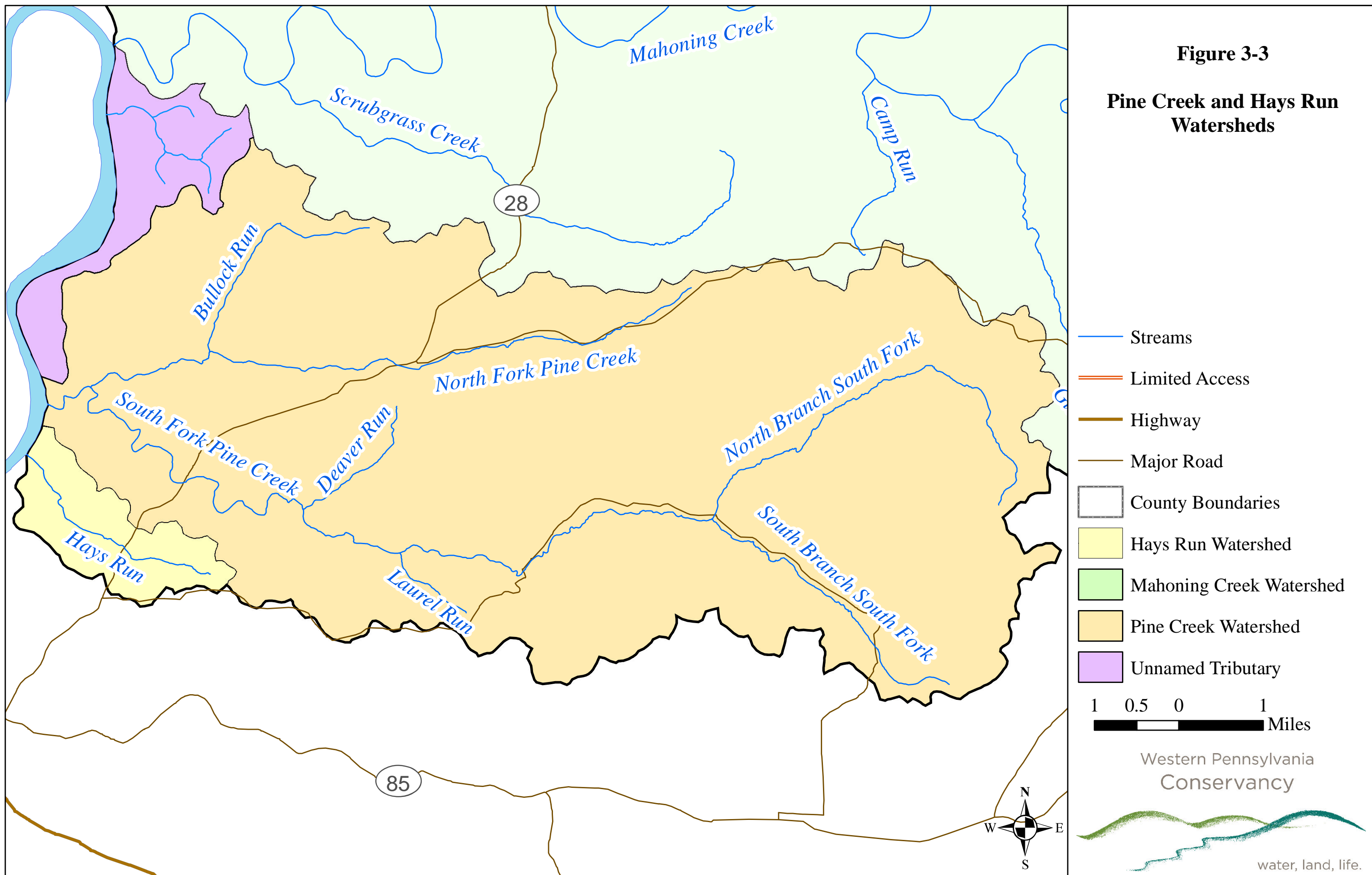


-  Streams
-  Limited Access
-  Highway
-  Major Road
-  County Boundaries
-  Hays Run Watershed
-  Mahoning Creek Watershed
-  Pine Creek Watershed
-  Unnamed Tributary



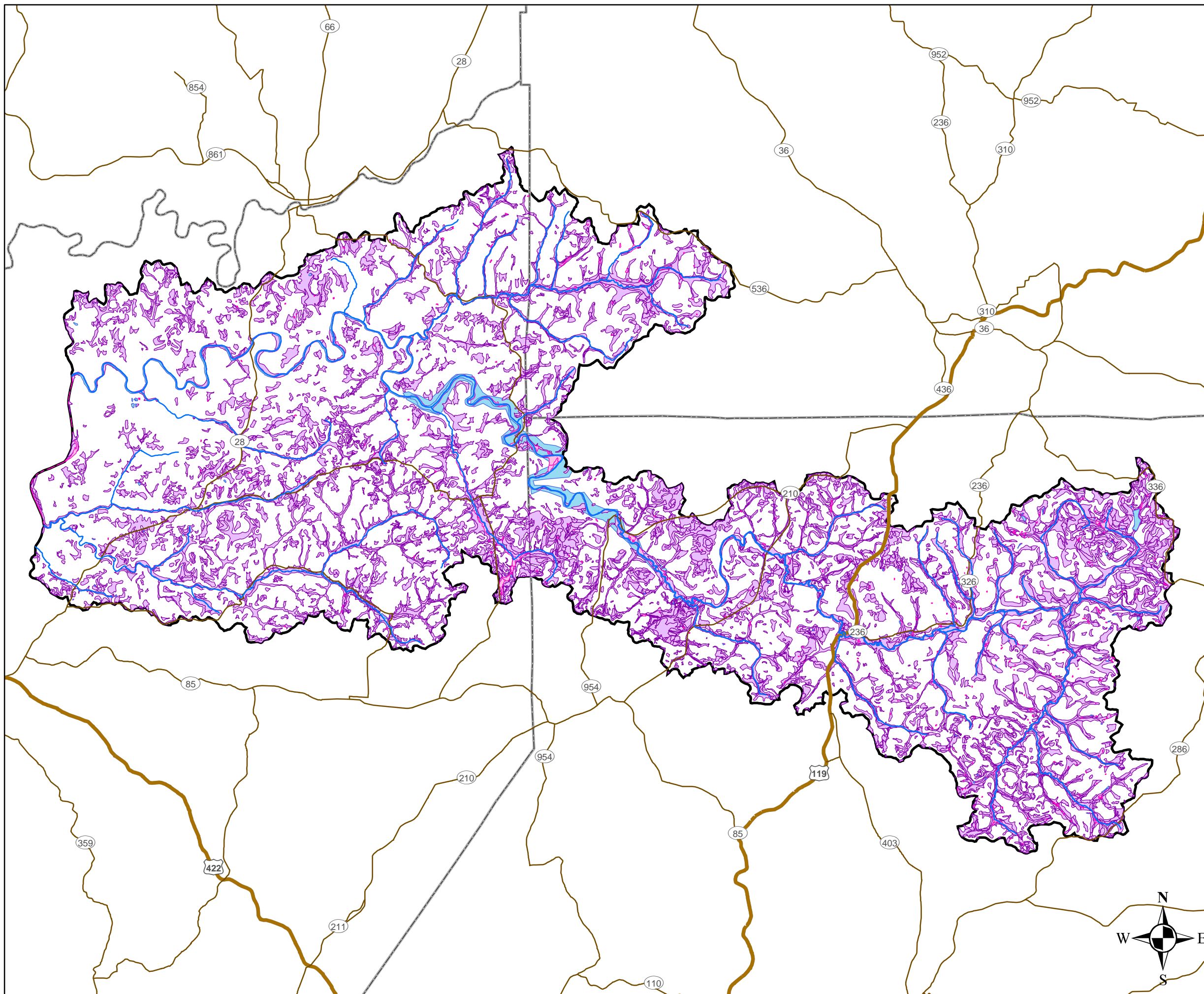
**Figure 3-3**

**Pine Creek and Hays Run Watersheds**



**Figure 3-5**

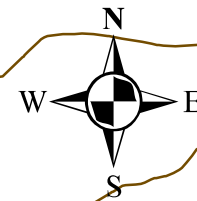
**Lakes, Ponds, Wetlands  
and Hydric Soils**



-  Streams
-  Limited Access
-  Highway
-  Major Road
-  Lakes and Ponds
-  Wetlands
-  Hydric Soils
-  County Boundaries

3 1.5 0 3 Miles

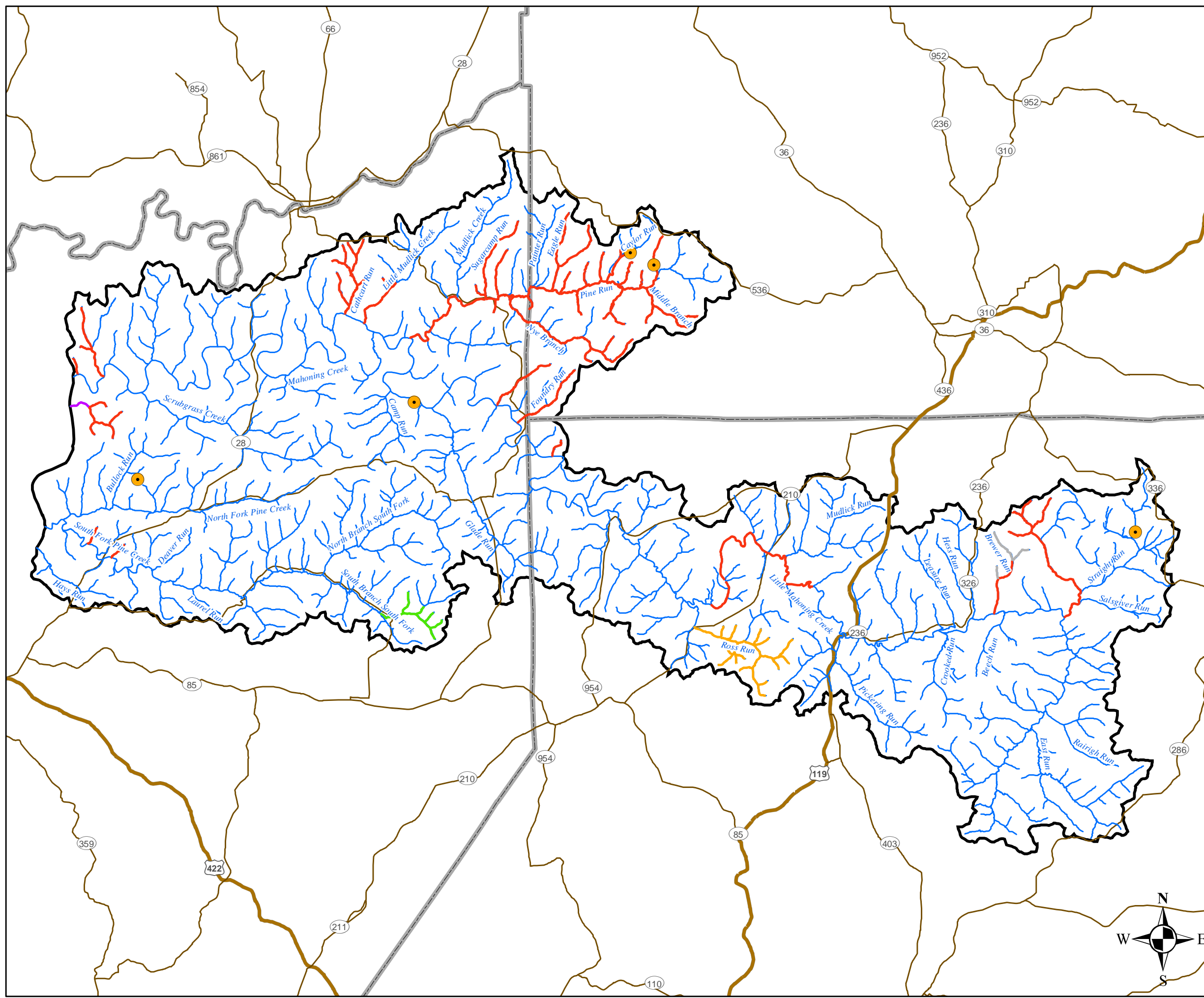
Western Pennsylvania  
Conservancy



water, land, life.

**Figure 3-7**

**Impairments and Obstructions**



- Dams
- Impaired Streams**
- Abandoned Mine Drainage
- Agriculture
- Grazing Related Agriculture
- On site Wastewater
- Road Runoff
- Streams
- Limited Access
- Highway
- Major Road
- County Boundaries
- Lower Mahoning Watershed

